



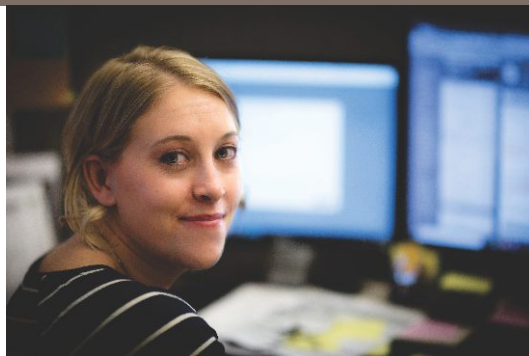
BERGHAMMER

Construction Corporation



See Your
Start With
Berghammer.

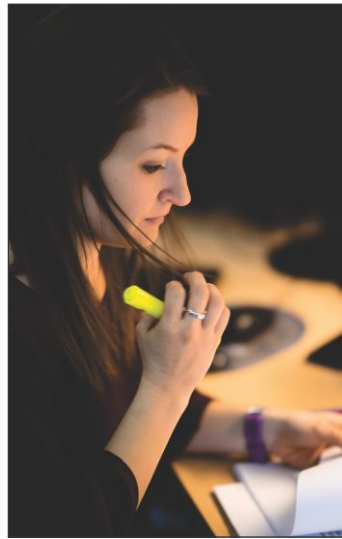
THE RIGHT SIZE. THE RIGHT PEOPLE. THE RIGHT EXPERTISE.



Join Our Team

Consider Berghammer Construction Corporation, a company whose culture is founded on the premise that The RIGHT PEOPLE at The Right SIZE firm with the The Right EXPERTISE will produce The Right RESULTS, for you in the first step on your career ladder. Although construction is still thought of in terms of its tangible elements such as bricks and mortar, it is really a people business. If you thrive on achievement, are a critical thinker and problem solver, and enjoy collaboration with team members, vendors, partners and clients, we invite you to consider Berghammer as a place to start your career — and probably stay!

Berghammer offers a competitive salary and employee benefits package, and the opportunity to grow with one of Southeast Wisconsin's most respected General Contractors. We offer financial stability, management and technical resources to successfully complete complex projects. We are large enough to offer a full spectrum of professional services, yet small enough for our principals to give personal attention to all of our clients, regardless of the project size. We're known as people who "pull out all the stops" to do whatever it takes to satisfy our clients and strengthen our partner relationships.



Growing Talent

To build an outstanding construction company, we build on great people. We are looking for self-motivated individuals who will excel at customer satisfaction and embrace relationship-building at all levels—from new prospective clients to our subcontractor partners. Our employees are offered both formal and informal training experiences to sharpen their skills and enhance their expertise. We believe employees are more apt to succeed in a work environment that is enriching, professional and productive.

Making a Difference

Berghammer office and field staff participated in the 2022 Block Build MKE, an annual event where corporations and volunteers transform communities in one weekend by providing free, critical home repairs to low-income veterans, seniors, and people with disabilities.

A Little Background...

Located in Metro Milwaukee, Berghammer Construction Corporation provides construction management, general contracting and design/build services to our clients throughout Southeastern Wisconsin.

Berghammer is dedicated to helping our clients find the right solution for their needs while making the construction process as seamless as possible. That is accomplished by combining a wealth of industry experience and construction expertise with a team of experienced, talented professionals to manage the process.

At over \$110 million in revenue, Berghammer is large enough to handle just about any project. The company also has the tools and processes that larger contractors have, but is not too big to give each and every customer the personal attention they deserve.

Experience

Berghammer has managed the construction of countless facilities that serve a wide variety of industries. Drawing on that experience, Berghammer's people know the nuances of many types of buildings. They've done it before, and that confidence is backed up by results. Our experience includes:

- Commercial Office & Tenant Improvement
- Education
- Healthcare
- Senior Living
- Hospitality & Entertainment
- Industrial & Distribution
- Institutional & Community
- Multi-family
- Retail



2022 Employee Bag Toss Tournament. One of many events and outings sponsored by the Berghammer Social Squad.

Our Culture

Self Starters

We pursue the goals of our clients as our own: Passionately. Relentlessly. Inquisitively. We are driven to create and we are not afraid to share our opinions, offer suggestions, and ask, "Why not?" To get the best results, we cannot be yes-people. We must pose challenges and ask tough questions.

Pathfinders

As leaders of the construction process, our goal is to always look for a better way and to never take things for granted. We know the lay of the construction land. We love the journey – especially when it takes us beyond bricks and mortar to being engaged in all facets of a project from site selection and creative financing, to design alternatives and equipment requirements.

Problem Solvers

It would be easy to simply pull an old plan off the shelf, dust it off and start to work. But then, things would never get better. We love a good challenge. Searching for innovative techniques and new methods to meet our client's objectives – and exceed expectations is what we do best.

Value Seekers

We can take orders. But the full value of our involvement is realized when we take a leadership role. Being involved in all facets of a project – from site selection and creative financing to design alternatives and equipment requirements – allows us find creative solutions to maximize the client's investment and the finished results.

Our Values:

INTEGRITY • We do what is right.

ACCOUNTABLE • We do what we say.

SERVICE • We focus on the greater good.

PROACTIVE • We anticipate, analyze, and act.

COLLABORATIVE • We do great things together.

Our Mission:

We deliver the ultimate construction experience.

Some Recent and In-progress Projects...



Eaton Badger Drive SW Factory and Office Expansion



Lumen Christi Church Expansion & Renovation



Breeze Terrace Apartments



Downtown Montessori Academy Addition



Enterprise Buildings 2,3,4, and (underway) 5 & 6.



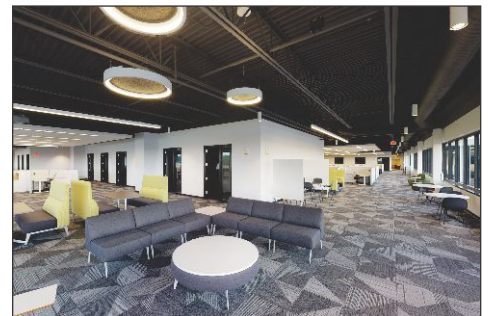
Seeds of Health - Tenor H.S. Journal Square Campus



Foxtown Brewing Annex (new construction)



Foxtown Brewing Company (renovation)



Eaton Badger Drive SW Expansion Office Mezzanine

THE RIGHT SIZE. THE RIGHT PEOPLE. THE RIGHT EXPERTISE.



BERGHAMMER

Construction Corporation

4750 North 132nd Street
Butler, WI 53007
262.790.4750

www.berghammer.com

To email a cover letter and/or resume,
please send to: hr@berghammer.com

