



BERGHAMMER

Construction Corporation

CASE STUDY: Select Medical

Driving Efficiency with Innovative Door Systems

Project Cost: \$3.6 million

Project Size: 20,000 SF

Duration: August 2023 - October 2024

Contact: Martin Chapa

262-790-4750

martinc@berghammer.com



This project involved a second-floor renovation at Select Medical's 58-bed, free-standing long-term acute care hospital in Madison, Wisconsin. The Berghammer team saw an opportunity to improve the efficiency and flow of the construction schedule with an innovative door frame system solution from Qwik Install.

The Challenge

Traditional door installation can create bottlenecks in tight construction schedules, leading to delays. Waiting for door and hardware packages, coordinating on-site assembly with drywall and painting crews, and potential door frame damage during construction all contribute to lost time and money.

Solution

The project team implemented the Qwik Install welded hollow metal door frame systems for the majority of door installations:

Walls First: The Qwik Install system allowed us to build the walls first, allowing electrical, plumbing, and drywall to be completed efficiently.

Frames/Doors Later: Once the walls were painted, Qwik Install frames were efficiently placed. Painters and drywallers did not have to work around door installation.

Reduced Constraints: Qwik Install minimized the need for upfront door frame procurement, a typical source of delays. Additionally, the pre-made door kits minimize potential door frame damage during construction.

Results

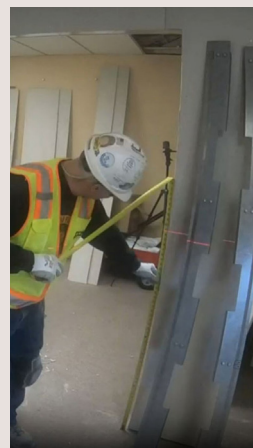
Better Schedule Flow: We eliminated early constraints on the project schedule, allowing for an efficient workflow.

Consistent Door Product: The majority of doors were the Qwik Install systems, offering both added structural integrity and adaptability to different wall thicknesses.

Productivity: drywall and painting trades productivity was increased by as much as 30%.

Schedule Gains: project was ahead of schedule with a high QA/QC rating.

Learn More



**Installation
Demo Video**





BERGHAMMER
Construction Corporation

RESULTS SUMMARY

Select Medical - Madison, WI

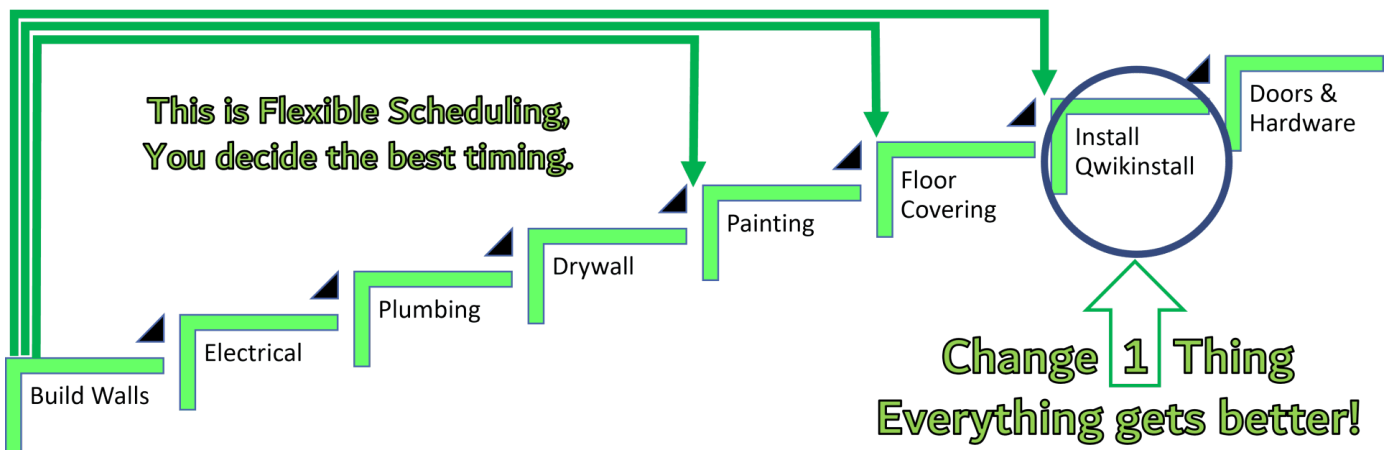
Improved schedule sequence

Consistent door product

Increased trades productivity

Ahead of schedule

Qwikinstall breaks the Process Dependency between installing welded frames and constructing the wall.



Qwik Install 6-step system

