

Urban Ecology Center • Menomonee Valley



The Urban Ecology Center – Menomonee Valley is the third “branch” location for the organization. An existing tavern/apartment space was converted and added on to create a unique community and learning center. Accommodating groups of students from nearby schools, serving as a community center and hosting summer camps available to all ages are just some of the functions this building is intended to serve. The renovated space with the addition totals 7,000 SF over three floors. The function of each floor is as follows:



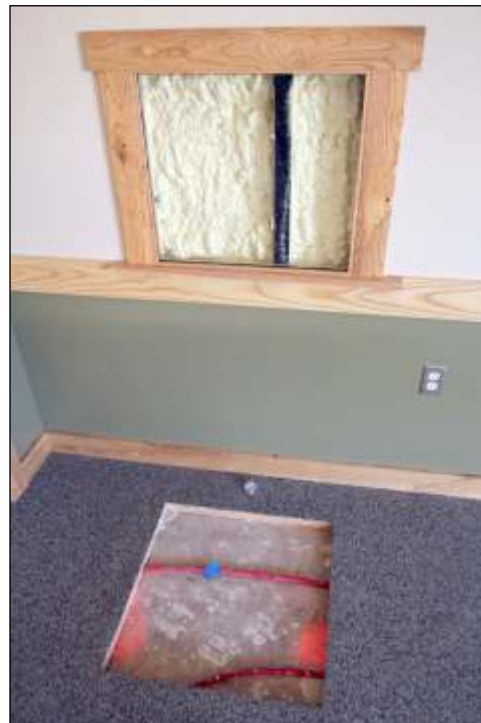
2nd Floor Classroom

Lower Level – 40% of the lower level is dedicated to two classroom spaces. One space has double doors that open up to an outdoor patio/teaching space. The other classroom houses native Wisconsin wildlife as well as serving as classroom. 25% of the lower level is dedicated to the main public toilet rooms, laundry and a shower room. The balance is for circulation.



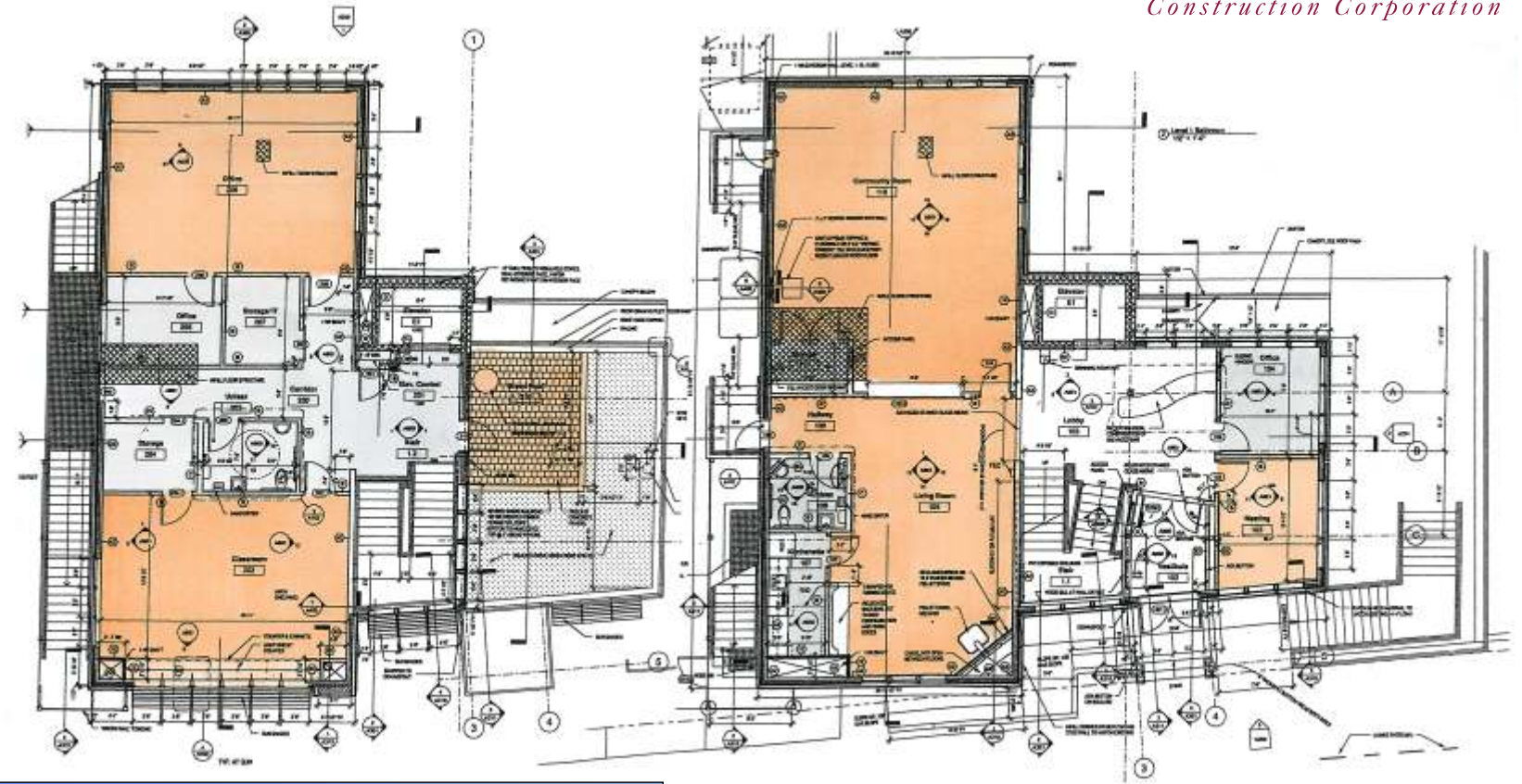
Living Room & Community Room Beyond

First Level – The first floor is the most flexible space in the building. The “Living” room and community room occupy 60% of the space. These two rooms are meant for classroom space, community space and meeting space. They are separated by a large sliding door so they can be combined into one large space or separated into two smaller areas. 20% of the first floor is occupied by office, meeting and reception areas. The remaining 20% includes a kitchenette and circulation.



Exposed insulation & heating systems to provide learning opportunities.

Second Level – There is one interior classroom space using approximately 25% of the second floor along with an exterior green roof, used as a teaching tool, that takes another 20% of the space. The balance serves office space, storage, toilet rooms, server closet and circulation.



Address
3700 W. Pierce St.
Milwaukee, WI 53215

Building Totals
7,000 Gross SF
3 Finished Levels
50% Classroom
30% Office/Support
20% Circulation

